



## Flora Close

Stanmore

£1,300,000

Davidson Frost-Wellings are pleased to present this rarely available six bedroom, three bathroom, 'Heather' style detached family home. Enjoying a tranquil setting in one of Stanmore's finest streets and nestled within the highly desirable Brockley Park development. The property benefits with excellent access to Stanmore Station, local schools, shops, and amenities.

Flora Close in the Brockley Park estate consists of only detached & executive homes situated on the edge of greenbelt that borders over acres of open space and beyond. There are multiple & excellent private and state schools in the vicinity including North London Collegiate, Avanti House, Haberdashers and Merchant Taylors. Furthermore, local amenities are easily accessible, offering excellent transport facilities with links to London with Stanmore Underground Station and the A41, M1 and M25 all located nearby.

Harrow Council tax band G

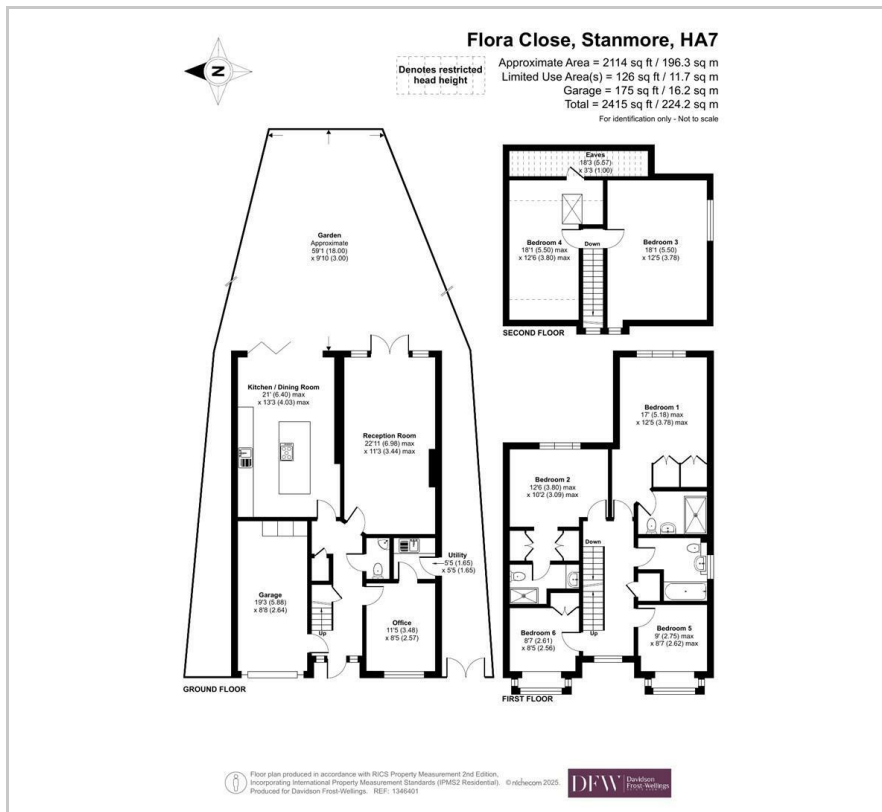
### Viewing

Please contact our Davidson Frost-Wellings Office on 020 8954 8806 if you wish to arrange a viewing appointment for this property or require further information.

- Six bedrooms
- Three bathrooms
- Modern fitted kitchen
- Off street Parking For Several Vehicles
- Garage
- Sought after location



# Floor Plan



# Area Map



## Energy Efficiency Rating

	Current	Potential
Very energy efficient - lower running costs		
(92 plus) <b>A</b>		
(81-91) <b>B</b>		
(69-80) <b>C</b>	<b>77</b>	<b>80</b>
(55-68) <b>D</b>		
(39-54) <b>E</b>		
(21-38) <b>F</b>		
(1-20) <b>G</b>		
Not energy efficient - higher running costs		
<b>England &amp; Wales</b>	EU Directive 2002/91/EC	



These particulars, whilst believed to be accurate are set out as a general outline only for guidance and do not constitute any part of an offer or contract. Intending purchasers should not rely on them as statements of representation of fact, but must satisfy themselves by inspection or otherwise as to their accuracy. No person in this firm's employment has the authority to make or give any representation or warranty in respect of the property.